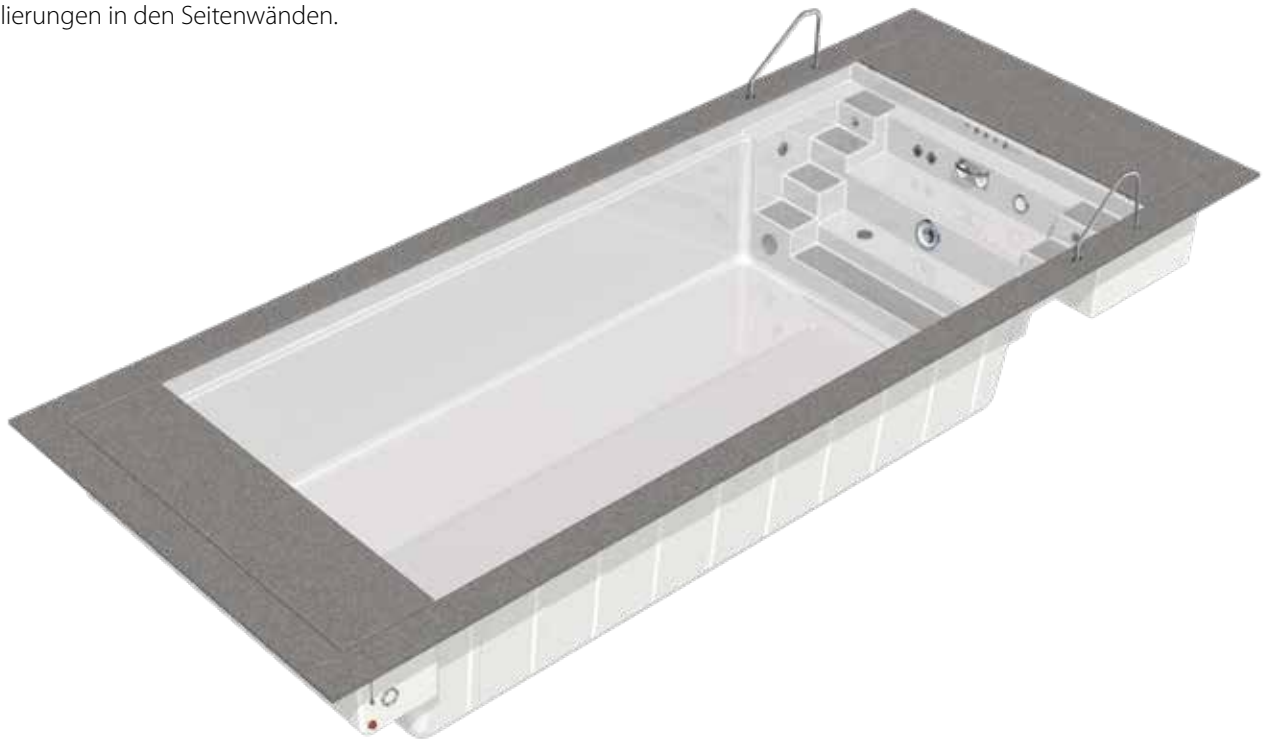


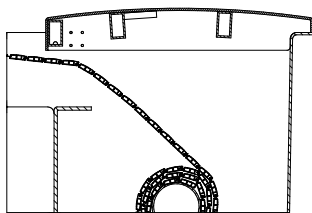
TWIN „S“ 700/800/745/845/945

Einstückschwimmbecken aus Epoxy-Acrylat:

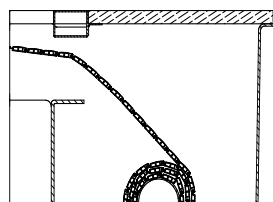
Beidseitige 5-stufige Treppenanlage mit großzügiger Sitz- und Liegestufe im Zentrum, Einbauwand zur Installation von Gegenschwimm- und Massageanlagen, Becken mit 6° Wandschräge, Rollladensicherheitskante mit integriertem Stahlrahmen, Becken mit 30 mm Isolierung im Boden und Profilierungen in den Seitenwänden.



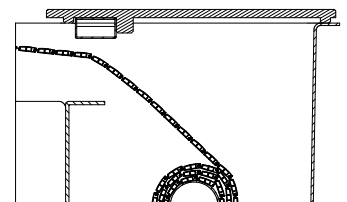
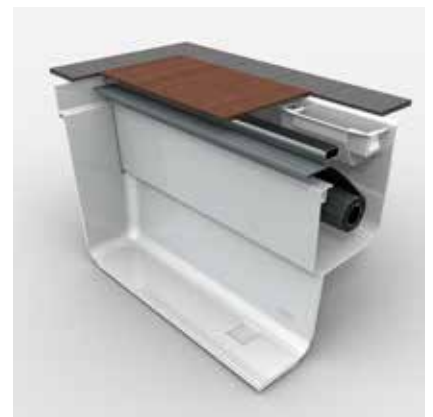
INTEGRA 3-19



Integra 3-19 mit Abdeckung in Steinstruktur aus GFK



Integra 3-19 mit Edelstahl - Sturzbalken STONE. Decksteine bauseits!



Integra 3-19 mit Sonnendeck aus Edelholz

Alle Abbildungen beinhalten Ausstattungspaket und Sonderzubehör. Positionen der Einbauteile der Pakete sind nicht veränderbar.



BECKENTYP:

TWIN „S“ 700 TWIN „S“ 800 TWIN „S“ 745 TWIN „S“ 845 TWIN „S“ 945
 B TwiS320ST .. B TwiS800ST .. B TwiS745ST .. B TwiS845ST .. B TwiS945ST ..

Innenmaße in Meter	7,00 x 3,20 x 1,50	8,00 x 3,20 x 1,50	7,45 x 3,70 x 1,50	8,45 x 3,70 x 1,50	9,45 x 3,70 x 1,50
Beckeninhalt in m³	25	30	32	37	42
Farben: weiß (03)	10.425,-	11.135,-	15.145,-	15.945,-	16.745,-
meerblau (04), sand (13), papyrus (19) und silbergrau (22)	10.735,-	11.470,-	15.600,-	16.420,-	17.240,-
granolith stonegrey (40)	12.300,-	13.140,-	17.870,-	18.815,-	19.760,-
Stufen farbig abgesetzt (siehe Seite 3)	215,-	215,-	269,-	269,-	269,-
Ausführung „CLASSIC“ Mehrpreis für 2 cm Isolierung der Seitenwände	1.850,- B TwiS320CL ..	2.095,- B TwiS800CL ..	2.095,- B TwiS745CL ..	2.395,- B TwiS845CL ..	2.695,- B TwiS945CL ..
MOSAIKBORTE 20 cm hoch oberhalb der Rollladenkante (siehe Seite 3)	1.632,-	1.792,-	1.784,-	1.944,-	2.104,-

AUSSTATTUNGSPAKET

1 Skimmer mit Wasserniveauregler, 2 Einlaufdüsen, 1 seitlicher Ansaugfitting, 1 Bodenablaufmulde als Pumpensumpf mit Antiwirbeldeckel, 1 Unterwasserscheinwerfer LED weiß, mit Trafo und Anschlussdose

Ausführung Edelstahl Blenden poliert (0) oder weiß (1), per Satz	2.248,- A 3 540 50.	2.248,- A 3 540 50.	2.248,- A 3 540 50.	2.248,- A 3 540 50.	2.248,- A 3 540 50.
Ausführung Kunststoff Blenden, weiß (03) oder grau (22) , per Satz	1.797,- A 3 540 60.	1.797,- A 3 540 60.	1.797,- A 3 540 60.	1.797,- A 3 540 60.	1.797,- A 3 540 60.
HANDLAUF Marina Edelstahl, poliert, per Stück	426,- A 2 303 100	426,- A 2 303 100	426,- A 2 303 100	426,- A 2 303 100	426,- A 2 303 100
UNTERBAUSCHACHT anlaminiert mit Deckel aus Cumaruholz oder mit GFK-Deckel mit Steinstruktur	3.714,- A 2 322 060	3.714,- A 2 322 060	4.151,- A 2 322 070	4.151,- A 2 322 070	4.151,- A 2 322 070
BECKENRANDSTEIN Granit grau 50 x 35 x 4 cm	1.618,- A 3 020 376	1.756,- A 3 020 356	1.817,- A 3 022 306	1.928,- A 3 020 406	2.034,- A 3 022 506

ROLLABDECKUNG INTEGRA 3-19

Rollladenschacht, verlängert das Becken um 48 cm, mit Frontblende in Beckenfarbe, Aufrollvorrichtung mit Tauchtriebemotor, inkl. Schaltkasten und Schlüsseltaster inkl. 2 Treibdüsen

8.445,- B Twi700.... Int3	8.445,- B Twi800.... Int3	9.029,- B Twi745.... Int3	9.029,- B Twi845.... Int3	9.029,- B Twi945.... Int3
-------------------------------------	-------------------------------------	-------------------------------------	-------------------------------------	-------------------------------------

SCHACHTABDECKUNG AUS GFK

in Steinstruktur inkl. Niederhalterohr, erhältlich in allen Farben für REKU-Serienbecken

1.045,- K Int320DK2 ..	1.045,- K Int320DK2 ..	1.076,- K Int370DK2 ..	1.076,- K Int370DK2 ..	1.076,- K Int370DK2 ..
----------------------------------	----------------------------------	----------------------------------	----------------------------------	----------------------------------

SCHACHTABDECKUNG „STONE“

Sturzbalken aus Edelstahl 120 x 80 x 4 mm, mit Auflagekante für Deckplatten, 40 mm stark, auf dem Beckenrand montiert. Decksteine bauseits

1.769,- SBZ00560505	1.769,- SBZ00560505	1.962,- SBZ00560502	1.962,- SBZ00560502	1.962,- SBZ00560502
-------------------------------	-------------------------------	-------------------------------	-------------------------------	-------------------------------

SONNENDECK INTEGRA

Rollladenschachtdeckung aus Cumaruholz mit profilierter Oberfläche, Sturzbalken aus Edelstahl, Niederhalterohr mit 4 Gurten

2.433,- A 3 938 041	2.433,- A 3 938 041	2.887,- A 3 938 040	2.887,- A 3 938 040	2.887,- A 3 938 040
-------------------------------	-------------------------------	-------------------------------	-------------------------------	-------------------------------

ROLLADENABDECKUNG

aus Hohlkammerprofilen, 6 cm, mit Endstopfen wasserdicht vergossen

2.015,- A 01-0302232	2.279,- A 01-0302233	2.683,- A 01-0303232	2.976,- A 01-0203233	3.282,- A 01-0203234
3.105,- A 01-0202232	3.480,- A 01-0202233	4.087,- A 01-0203232	4.561,- A 01-0203233	5.031,- A 01-0203234
4.100,- A 01-0402232	4.656,- A 01-0402233	5.452,- A 01-0403232	6.085,- A 01-0403233	6.706,- A 01-0403234

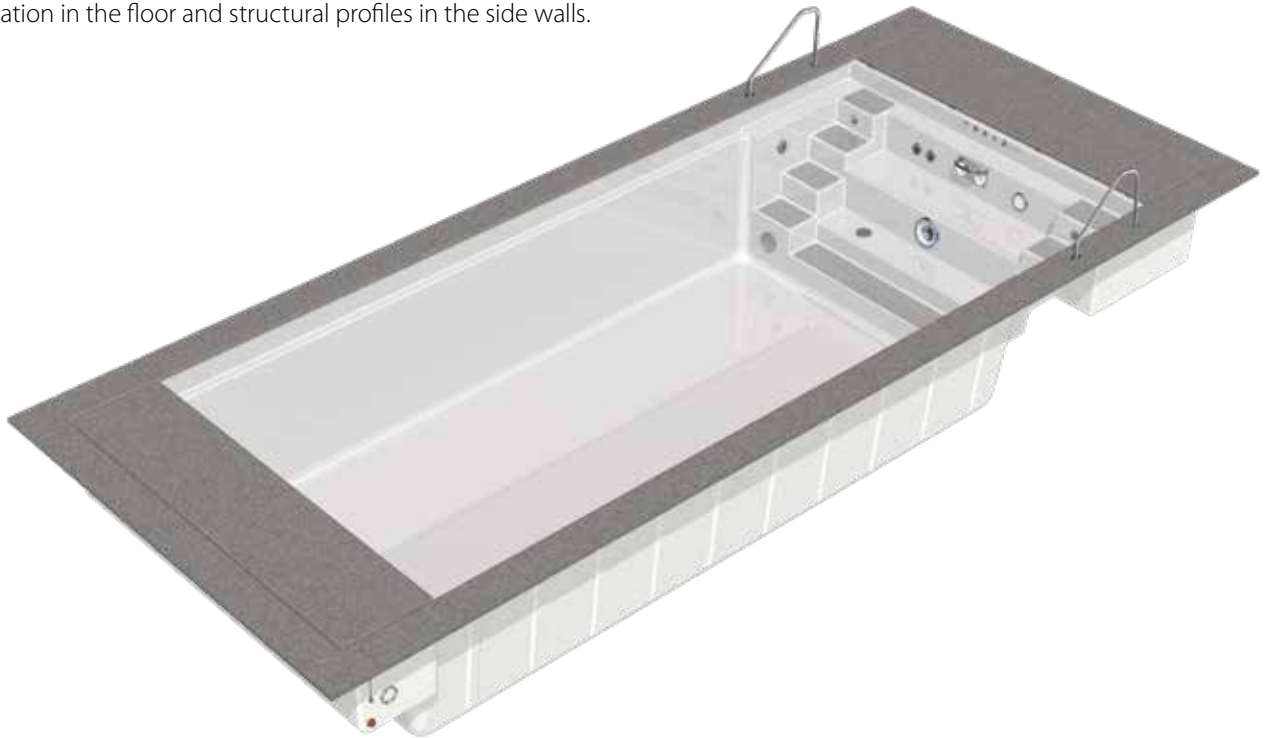
BEFÖRDERUNG innerhalb BRD und Benelux, netto
 Österreich, netto
 bis zur Schweizer Grenze
 innerhalb der Schweiz (wird nach Aufwand, per km berechnet)
 Einsetzen des Beckens mit Bordkran, wenn möglich

FBec001	1.740,-
FBec002	1.260,-
FBec011	1.740,-
FBec013	3,20/km
FKra001	235,-

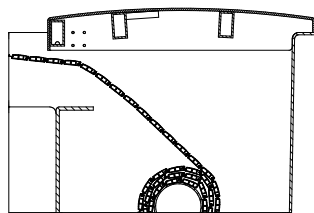
TWIN „S“ 700/800/745/845/945

One-piece swimming pool made of Epoxy-Acrylate

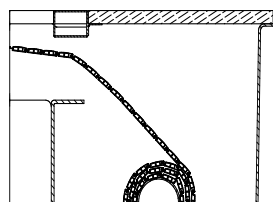
5 pool steps with anti-slip-profiled surface on each side of the pool with a generous central seating area allowing the installation of a counter-current unit and massage jets to the back wall. Pool with 6 degree wall incline and roller shutter safety ledge with integrated steel beam. Pool with 30 mm insulation in the floor and structural profiles in the side walls.



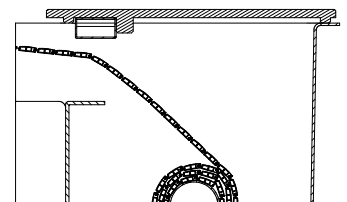
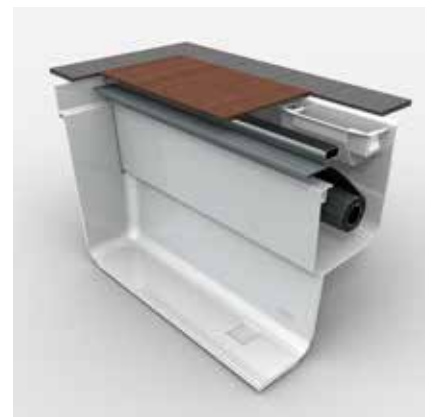
INTEGRA 3-19



Integra 3-19 with cover made of GRP including stone textured finish



Integra 3-19 with stainless steel lintel beam STONE. Capstones on site!



Integra 3-19 with noble wood sun deck

All pools shown are with equipment package and options. Position of equipment cannot be changed.



BECKENTYP:

TWIN „S“ 700 TWIN „S“ 800 TWIN „S“ 745 TWIN „S“ 845 TWIN „S“ 945
 B TwiS320ST .. B TwiS800ST .. B TwiS745ST .. B TwiS845ST .. B TwiS945ST ..

Dimensions in meters	7,00 x 3,20 x 1,50	8,00 x 3,20 x 1,50	7,45 x 3,70 x 1,50	8,45 x 3,70 x 1,50	9,45 x 3,70 x 1,50
Water content in m³	25	30	32	37	42
Colours: white (03)	10.425,-	11.135,-	15.145,-	15.945,-	16.745,-
sea blue (04), sand (13), papyrus (19) and silver grey (22)	10.735,-	11.470,-	15.600,-	16.420,-	17.240,-
granolith stonegrey (40)	12.300,-	13.140,-	17.870,-	18.815,-	19.760,-
Steps in a different colour (see page 3)	215,-	215,-	269,-	269,-	269,-
Version „CLASSIC“	1.850,-	2.095,-	2.095,-	2.395,-	2.695,-
Extra charge for 2 cm insulation of the side walls	B TwiS320CL ..	B TwiS800CL ..	B TwiS745CL ..	B TwiS845CL ..	B TwiS945CL ..
MOSAIC BORDER 20 cm high above the roller shutter edge (see page 3)	1.632,-	1.792,-	1.784,-	1.944,-	2.104,-

EQUIPMENT PACKAGE

1 skimmer with water level controller, 2 inlet jets, 1 low level wall suction fitting, 1 bottom outlet sump with cover, 1 underwater light, LED warm white with transformer and plastic connection box

Version Metal Face plates stainless steel polished (0) or white (1) per set	2.248,- A 3 540 50.	2.248,- A 3 540 50.	2.248,- A 3 540 50.	2.248,- A 3 540 50.	2.248,- A 3 540 50.
Version Plastic Face plates white (03) or grey (22), per Set	1.797,- A 3 540 60.	1.797,- A 3 540 60.	1.797,- A 3 540 60.	1.797,- A 3 540 60.	1.797,- A 3 540 60.
HANDRAIL Marina Stainless steel, polished, per piece	426,- A 2 303 100	426,- A 2 303 100	426,- A 2 303 100	426,- A 2 303 100	426,- A 2 303 100
EQUIPMENT SHAFT laminated with wood sun deck or GRP cover incl. stone textured finish	3.714,- A 2 322 060	3.714,- A 2 322 060	4.151,- A 2 322 070	4.151,- A 2 322 070	4.151,- A 2 322 070
COPING STONES granite grey 50 x 35 x 4 cm	1.618,- A 3 020 376	1.756,- A 3 020 356	1.817,- A 3 022 306	1.928,- A 3 020 406	2.034,- A 3 022 506

ROLLER SHUTTER INTEGRA 3-19

Roller shutter shaft integrated in the pool, with front panel in pool color, with internal gear motor and stainless steel wall fixings, factory-installed; incl. control box and key switch.

8.445,- B Twi700.... Int3	8.445,- B Twi800.... Int3	9.029,- B Twi745.... Int3	9.029,- B Twi845.... Int3	9.029,- B Twi945.... Int3
-------------------------------------	-------------------------------------	-------------------------------------	-------------------------------------	-------------------------------------

SHAFT COVER MADE OF GRP

including stone textured finish and weighted pipe cover tensioner. Available in the same colours as the swimming pools.

1.045,- K Int320DK2 ..	1.045,- K Int320DK2 ..	1.076,- K Int370DK2 ..	1.076,- K Int370DK2 ..	1.076,- K Int370DK2 ..
----------------------------------	----------------------------------	----------------------------------	----------------------------------	----------------------------------

SHAFT COVER „STONE“

Stainless steel lintel beam of 120 x 80 x 4 mm, with support edge for cover plates, 40 mm thick, mounted on the pool edge. Capstones on site

1.769,- SBZ00560505	1.769,- SBZ00560505	1.962,- SBZ00560502	1.962,- SBZ00560502	1.962,- SBZ00560502
-------------------------------	-------------------------------	-------------------------------	-------------------------------	-------------------------------

SHAFT COVER WOOD SUNDECK

Roller shutter cover of 25 mm thick high-grade wood with contoured surface, stainless steel lintel beam and weighted pipe cover tensioner with 4 straps

2.433,- A 3 938 041	2.433,- A 3 938 041	2.887,- A 3 938 040	2.887,- A 3 938 040	2.887,- A 3 938 040
-------------------------------	-------------------------------	-------------------------------	-------------------------------	-------------------------------

ROLLER SHUTTER COVER made of hollow chamber profiles, 6 cm, cast waterproof with end plugs

Version PVC grey	2.015,- A 01-0302232	2.279,- A 01-0302233	2.683,- A 01-0303232	2.976,- A 01-0203233	3.282,- A 01-0203234
Version PVC solar	3.105,- A 01-0202232	3.480,- A 01-0202233	4.087,- A 01-0203232	4.561,- A 01-0203233	5.031,- A 01-0203234
Version Polycarbonate solar	4.100,- A 01-0402232	4.656,- A 01-0402233	5.452,- A 01-0403232	6.085,- A 01-0403233	6.706,- A 01-0403234

FREIGHT CHARGES

Insertion of the pool with an on-board crane, if possible

on request
FKra001 **235,-**